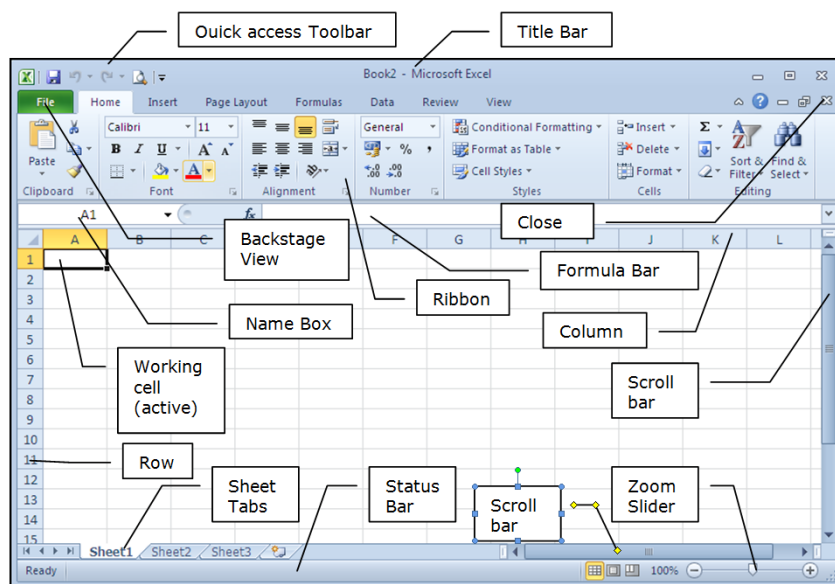




Excel 2010 Training

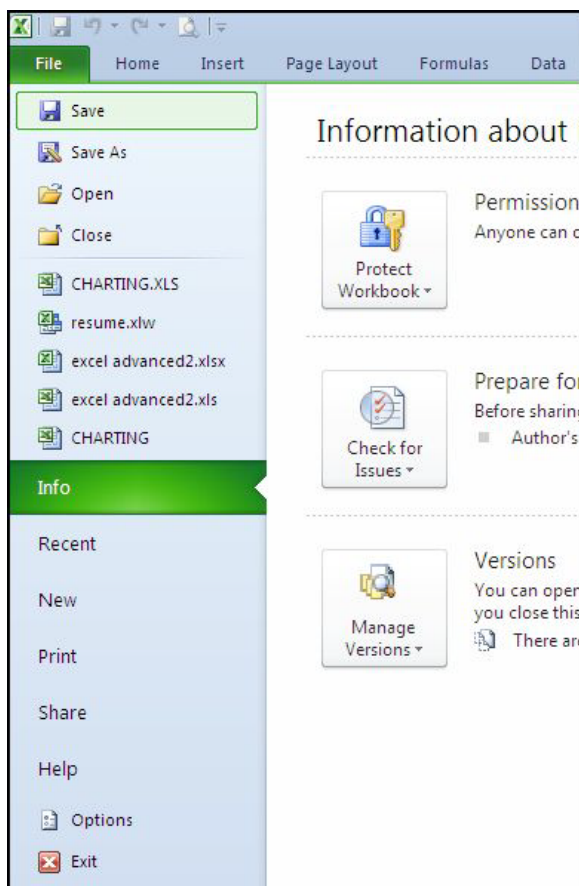
Excel Quick Reference Card

The Excel 2010 Screen



The Fundamentals

The **File Ribbon**, located in the upper left-hand corner of the program window, replaces the Office button found in the 2007 version of Microsoft Excel. The File ribbon gives access to backstage view which contains basic file management commands, including New, Open, Save, Print and Close. And Options



Mouse Training

Keyboard Shortcuts

General

- Open a Workbook <Ctrl> + <O>
- Create New <Ctrl> + <N>
- Save a Workbook <Ctrl> + <S>
- Print a Workbook <Ctrl> + <P>
- Close a Workbook <Ctrl> + <W>
- Help <F1>
- Run Spelling Check <F7>

Editing

- Cut <Ctrl> + <X>
- Copy <Ctrl> + <C>
- Paste <Ctrl> + <V>
- Undo <Ctrl> + <Z>
- Find <Ctrl> + <F>
- Replace <Ctrl> + <H>
- Select All <Ctrl> + <A>

Formatting

- Bold <Ctrl> +
- Italics <Ctrl> + <I>
- Underline <Ctrl> + <U>
- Open Format Cells Dialog Box <Ctrl> + <E>

- **To Create a New Blank Workbook:** Click the **File ribbon**, select **New**, and click **Create**, or press <Ctrl> + <N>.
- **To Open a Workbook:** Click the **File ribbon** and select **Open**, or press <Ctrl> + <O>.
- **To Save a Workbook:** Click the **Save button** on the Quick Access Toolbar, or press <Ctrl> + <S>.
- **To Save a Workbook with a Different Name:** Click the **File ribbon**, select **Save As**, and enter a new name for the presentation.
- **To Preview a Workbook:** Click the **File ribbon**, select **Print**
- **To Print a Workbook:** Click the **Office Button** and select **Print**, or press <Ctrl> + <P>.
- **To Quick Print:** Click the **File ribbon**, select **Print**, Click **Print** button.
- **To Undo:** Click the **Undo** button on the Quick Access Toolbar or press <Ctrl> + <Z>.
- **To Close a Workbook:** Click the **Close** button or press <Ctrl> + <W>.
- **To Get Help:** Press <F1> to open the Help window. Type your question and press <Enter>.
- **To Exit Excel:** Click the **File ribbon** and click **Exit**.

Editing

➤ **To Edit a Cell's Contents:** Select the cell, click the Formula Bar, edit the cell contents, and press **<Enter>** when you're finished.

➤ **To Clear a Cell's**

Contents: Select the cell(s) and press the **<Delete>** key.

➤ **To Cut or Copy Data:** Select cell(s) and click the **Cut** or **Copy** button in the Clipboard group on the Home tab.

➤ **To Paste Data:** Select the destination cell(s) and click the **Paste** button in the Clipboard group on the Home tab.

➤ **To Copy Using Auto Fill:** Point to the fill handle at the bottom-right corner of the selected cell(s), then drag to the destination cell(s).

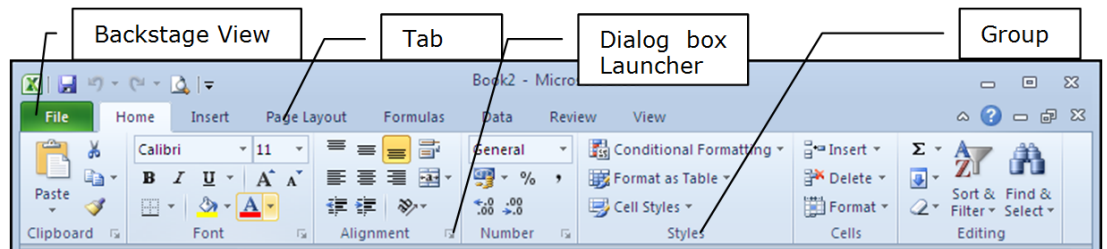
➤ **To Move or Copy Cells Using Drag and Drop:** Select the cell(s) you want to move or copy, position the pointer over any border of the selected cell(s), then drag to the destination cells. To copy, hold down **<Ctrl>** key while dragging.

➤ **To Paste Special:** Cut or copy the cell(s), select the destination cell(s), click the **Paste** button list arrow in the Clipboard group on the Home tab, and select **Paste Special**. Select an option and click **OK**.

➤ **To Insert a Column or Row:** Right-click the selected row or column heading(s) to the right of the column or below the row you want to insert and select **Insert** from the contextual menu.

➤ **To Delete a Column or Row:** Select the row or column heading(s) and either right-click them and select **Delete** from the contextual menu, or click the **Delete** button in the Cells group on the Home tab.

➤ **To Insert a Comment:** Select the cell where you want to insert a comment and click the **Review** tab on the Ribbon. Click the **New Comment** button in the Comments group. Type a comment, then click outside the comment text box. Point to the cell to view the comment.



Formatting

➤ **To Format Text:** Use the commands in the **Font** group on the **Home** tab, or click the **Dialog Box Launcher** in the **Font** group to open the Font dialog box.

➤ **To Format Values:** Use the **commands** in the **Number** group on the **Home** tab, or click the **Dialog Box Launcher** in the **Number** group to open the Format Cells dialog box.

➤ **To Copy Formatting with the Format Painter:** Select the cell(s) with the formatting you want to copy and click the **Format Painter** button in the Clipboard group on the Home tab. Then, select the cell(s) you want to apply the copied formatting to.

➤ **To Change Cell Alignment:** Select the cell(s) and click the appropriate alignment button (**Align Left**, **Center**, **Align Right**) in the **Alignment** group on the **Home** tab.

Formulas and Functions

➤ **To Total a Cell Range:** Click the cell where you want to insert the total and click the **AutoSum** button in the **Editing** group on the **Home** tab. Verify the selected cell range and press **return**.

➤ **To Enter a Formula:** Select the cell where you want to insert the formula, press **<=>**, and enter the formula using values, cell references, operators, and functions. Press **<Enter>** when you're finished.

➤ **To Insert a Function:** Select the cell where you want to enter the function and click the **Insert Function** button on the Formula Bar.

➤ **To Reference a Cell in a Formula:** Type the cell reference (for example, **B5**) in the formula or click the cell you want to reference.

➤ **To Create an Absolute Cell Reference:** Precede the cell references with a **\$** sign or press **<F4>** after selecting a cell range to make it absolute.

➤ **To Use Several Operators or Cell Ranges:** Enclose the part of a formula you want to calculate first in parentheses.

➤ **To Add Sparkline:** select data including cell you wish sparkline to appear. Go to **insert** tab **Sparklines** group select type of Sparkline you wish to use, **line**, **Columns**, **Win/Loss**.

Charts

➤ **To Create a Chart:** Select the cell range that contains the data you want to **chart** and click the **Insert** tab on the Ribbon. Click a chart type button in the **Charts** group and select the chart you want to use from the list.

➤ **To Adjust Column Width:** Drag the right border of the column header. **Double**-click the border to AutoFit the row according to its contents.

➤ **To Adjust Row Height:** Drag the bottom border of the row header. **Double**-click the border to AutoFit the row according to its contents.

➤ **To Add Cell Borders:** Select the cell(s), click the **Border** button list arrow in the Font group on the Home tab, and select a border type.

➤ **To Add Cell Shading:** Select the cell(s), click the **Fill Color** button list arrow in the Font group on the Home tab, and select a fill color.

➤ **To Apply a Document Theme:** Click the **Page Layout** tab on the Ribbon, click the Themes button in the Themes group, and select a theme from the gallery.

➤ **To Insert a Header or Footer:** Click the **Insert** tab on the Ribbon and click the **Header & Footer** button in the Text group. Enter header text.

Workbook Management

➤ **To Add a New Worksheet:** Click the **Insert Worksheet** tab next to the sheet tabs at the bottom of the program screen.

➤ **To Delete a Worksheet:** Select the sheet want to delete, click the **Delete** button in the **Cells** group on the **Home** tab, and select **Delete Sheet**. Or, right-click the sheet tab and select **Delete** from the contextual menu.

➤ **To Rename a Worksheet:** Double-click the sheet tab, enter a new name for the worksheet, and press **<Enter>**.

➤ **To Split a Window:** Drag either the vertical or horizontal split bar (located near the scroll bars) onto the worksheet.

➤ **To Freeze Panes:** Place the cell pointer where you want to freeze the window, click the **View** tab on the Ribbon, click the **Freeze Panes** button in the **Window** group, and select an option from the list. **To Select a Print Area:** Select the cell range you want to print, click the **Page Layout** tab on the Ribbon, click the **Print Area** button in the **Page Setup** group, and select **Set Print Area**.

➤ **To Adjust Page Margins, Orientation, Size, and Breaks:** Click the **Page Layout** tab on the Ribbon and use the commands in the **Page Layout** group, or click the **Dialog Box Launcher** in the **Page Setup** group to open the **Page Setup** dialog box.

➤ **To Protect or Share a Workbook:** Click the **Review** tab on the Ribbon and use the commands in the **Changes** group.